



Gripta 1009 | 1010

»» FOREST CRANE

The **GRIPTO 1010** is Kronos' largest and most powerful crane with a maximum reach of 10 meters. The **GRIPTO 1009** is the same crane but with a shorter design. Both models are ideal for professional use. With Smart Boom Control, the crane control becomes smooth as the operator can focus on controlling the crane tip instead of managing each part separately.

»» FEATURES

- Hoses (3/4") on the main functions.
- End damping on extensions.
- Phenomenal precision and fast movements even with relatively low oil flows.
- LED work lighting.
- Protected hoses (1/2") in the second boom.
- Oil feed to the grab and extension is internally routed within the second boom.
- Crane tip control Smart Boom Control, optional.

GRIPTO

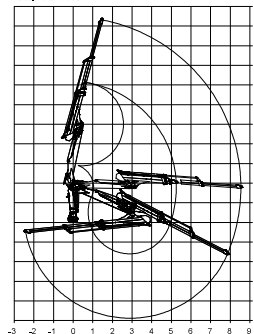
	1009	1010
Attaching	flange	flange
Max outreach	8,5 m	10 m
Length of main boom	3,28 m	3,68 m
Length of extension boom	2x1,65 m	2x2 m
Height	2,13 m	2,13 m
Width	1,46 m	1,46 m
Lifting moment, brutto/netto (4 m)	104/68 kNm	104/64 kNm
Allowable load (without grapple and rotator)	1740 kg/4m	1630 kg/4m
Turning angle of boom	380 degrees	380 degrees
Turning moment, brutto	30 kNm	30 kNm
Lubrication of turning device	oil	oil
Cylinders in turning device	4	4
Weight, basic loader	1550 kg	1600 kg
Working pressure	210 bar	210 bar
Recommended pump output	100-180 l/min	100-180 l/min

Recommended rotator: Indexator GV6

Recommended grapple: Hultdins Supergrip 260

Grapple size	0,26 m2	0,26 m2
Max opening of grapple	1525 mm	1525 mm
Minimum grapple diameter	90 mm	90 mm
Width of grapple	384/430 mm	384/430 mm
Weight, grapple + rotator	250 kg	250 kg

GRIPTO 1009



GRIPTO 1010

